

# Bollegraaf

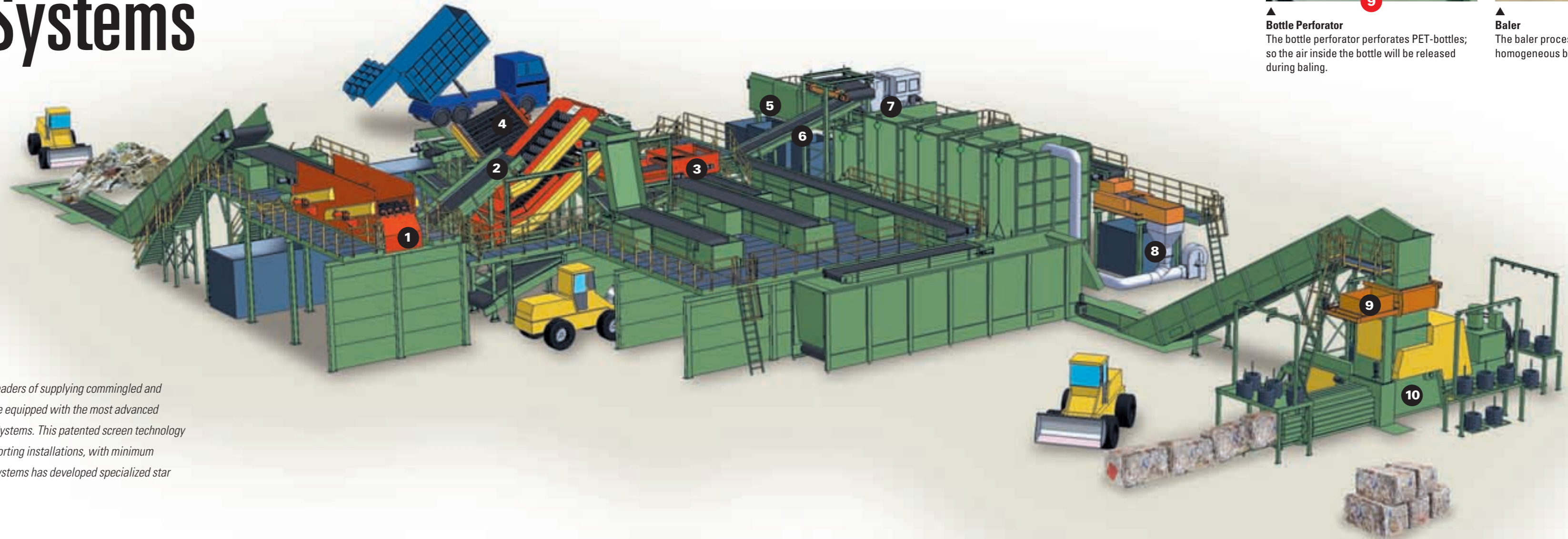


***Commingled and  
Single Stream***

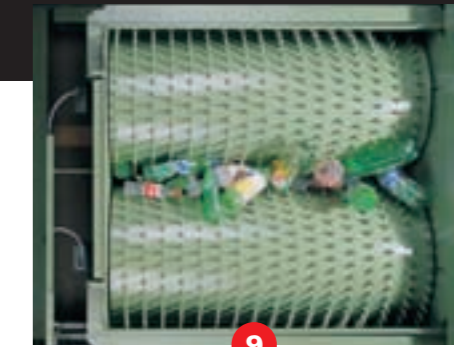


**Bollegraaf. Big in making recyclables small.**

# Commingled and Single Stream Sorting Systems



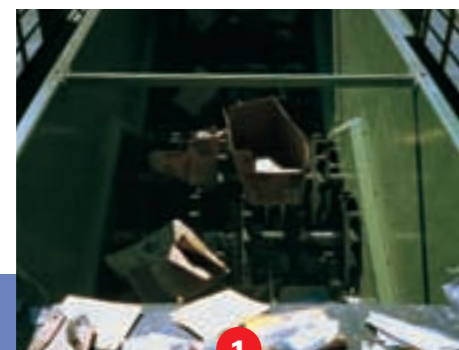
Bollegraaf Recycling Machinery is one of the worlds leaders of supplying commingled and single stream sorting systems. The sorting systems are equipped with the most advanced screening technology of Lubo Screening & Recycling Systems. This patented screen technology is responsible for the high capacity of the Bollegraaf sorting installations, with minimum employment of sorters. Lubo Screening & Recycling Systems has developed specialized star screens for every recyclable waste stream.



**▲ Bottle Perforator**  
The bottle perforator perforates PET-bottles; so the air inside the bottle will be released during baling.



**▲ Baler**  
The baler processes the material up to homogeneous bales.



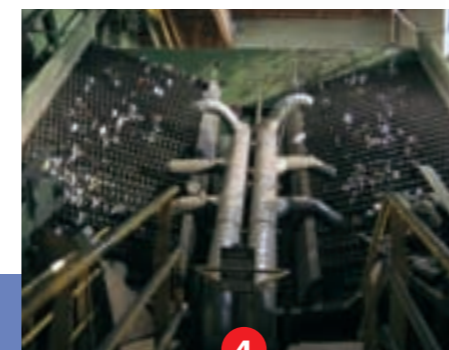
**▲ OCC Screen**  
The OCC Screen separates large OCC from the single stream or from news/mixed paper.



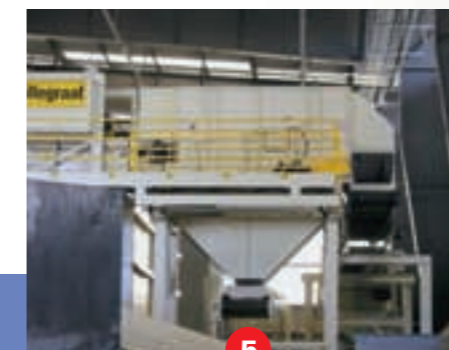
**▲ Double ONP Screen**  
Top deck of the screen separates newspaper from the single stream. Second deck contains a mix of newspaper and mixed paper. The throughput of the screen is mostly glass, bottles, cans and fines.



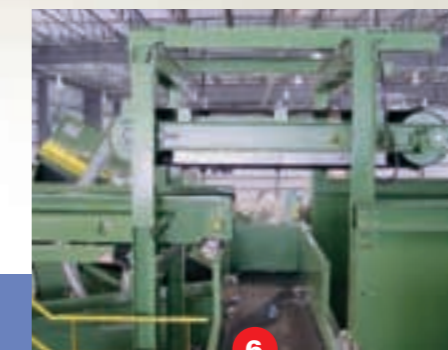
**▲ Paper Spike®**  
The Paper Spike® separates small pieces of OCC from paper.



**▲ Angle Sorter**  
The angle sorter separates the stream into 4 streams; glass, mixed paper, bottles/cans and fines.



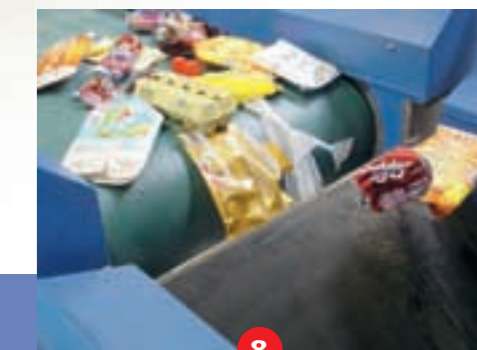
**▲ Glass Breaker**  
The glass breaker breaks glass into small pieces.



**▲ Magnet**  
The magnet takes the ferrous parts out of the stream.



**▲ Air Separation**  
Air separation splits the stream into heavy and light fractions (f.e. plastic from glass).



**▲ Eddy Current**  
The Eddy-Current takes the non-ferro material (f.e. aluminum cans) out of the stream.

# Advantages



*Newspapers  
and magazines*



*Cardboard*



*Aluminium*



*PE plastic*



*PET bottles*

## Advantages of commingled and single stream sorting systems

- High capacity with little effort of employees;
- Long life through steady construction and interchangeable wearing parts;
- Slight pollution of recyclable material by using star screens in stead of roto screens;
- Slight standstill through easy interchangeable stars in the screens and other wearing parts;
- Turn-key project supplier;
- All parts are modular constructed into a custom-made sorting system;
- Over 40 years of experience provides a maximum knowledge in designing sorting systems.

## It is easy to separate with the Bollegraaf Recycling Machinery sorting installations

- Flat and round material (f.e. paper and bottles/cans);
- De-inking paper;
- Aluminum cans;
- Ferrous cans;
- Colored glass;
- Card board;
- Magazines, newspapers;
- Several types of packaging.



▲ *Single Stream Installation Tide Water, USA.  
Capacity 20-22 tons per hour.*



▲ *Single Stream Installation RRA-York, USA.  
Capacity 20-22 tons per hour.*



▲ *Single Stream Installation Tide Water, USA.  
Capacity 20-22 tons per hour.*

COMMINGLED

# SINGLESTREAM



▲  
**Single Stream Installation SP Newsprint, USA.**  
*Capacity 15-20 tons per hour.*



▲  
**Single Stream Installation SP Newsprint, USA.**  
*Capacity 15-20 tons per hour.*



▲  
**Single Stream Installation Tide Water, USA.**  
*Capacity 20-22 tons per hour.*



▲  
**Single Stream Installation City Fibres, USA.**  
*Capacity 35 tons per hour.*



▲  
**Single stream waste material.**

This brochure is offered to you by:



**Bollegraaf Recycling Machinery**  
Tweede Industrieweg 1, 9902 AM Appingedam  
P.O. Box 321, 9900 AH Appingedam, The Netherlands  
Tel. +31 (0)596 65 43 33, Fax +31 (0)596 62 53 90  
info@bollegraaf.com, www.bollegraaf.com