

Bollegraaf



Steel-belt conveyor



Bollegraaf. Big in making recyclables small.

The Bollegraaf steel-belt conveyor: more than a strong belt

Bollegraaf Recycling Machinery has manufactured conveyor belts for moving wastepaper and various types of refuse for 40 years. Bollegraaf has designed steel belts especially for heavy applications. Steel-belt conveyors are used when peak loads are heavy, such as household refuse or industrial waste. The heavy steel construction ensures the frame and steel belt will have a long operational life.

Unique construction (2 patents pending)

The steel belt, the chain and the seals on either side of the steel belt form a unique assembly. The sections of the steel belt are set in a special shape so that the belt can take a heavy load. The sections mutually fit together like the pieces of a jigsaw puzzle. Patents have now been applied for on the shape of the belt sections and on the way they fit together. The side of the steel belt is provided with a plate that, together with the side panel, forms a so-called 'labyrinth seal'. The shape of these plates ensures that they don't touch each other at the reverse drums and the brakes. A patent is pending on this seal as well. If necessary, the sections of the steel belt can be replaced easily because they are bolted to the chain.

High quality

Automated, computer-controlled machines manufacture all components of the steel-belt conveyors. The drilling and sawing is done via a CNC-controlled drilling and sawing line. Plate sections are cut on a CNC-controlled oxygen cutting machine. A robot does all the welding, and the cutting and bending/forming is done by a CNC-controlled machine. The whole automated production process ensures consistent quality.

Solid construction

The steel-belt conveyor is a very solid construction. The side panels are made of 3 mm (1/8") plate steel strengthened with stiffening ribs. The tracks of the chain are made of specially shaped U-frames equipped with wear strips on the chain tracks. The side panels are mounted to the under frame with UNP160 sections.

Drive

The chain is driven through a motor with gearbox. The gearbox is mounted directly on the drive shaft. This ensures easy maintenance. Any possible shock loads are absorbed by rubber buffers that attach the motor to the frame.

Two versions

There are two versions of the steel belt, namely a heavy one and a VERY heavy one. The heavy version has two heavy chains on either side of the steel belt and has a pulling strength of 24,000 Pounds. with a pitch of 152,4 mm (6"). The very heavy version has two very heavy chains on either side of the belt and has a pulling strength of 36,000 Pounds. with a pitch of 203,2 (8"). The chains are equipped with large steel rollers to ensure a long operational life. The very heavy chain is used for very heavy loads, such as household refuse and bales of paper.

Various versions

The steel belt conveyor is available in three widths: 1.200, 1.600 or 2.000 mm (3'11", 5'3" or 6'7"). The steel belt is equipped with horizontal bends, diagonally rising and diagonally dropping. Various panel heights are available, for instance 150, 500 and 800 mm (6", 1'8" and 2'7"). The speed depends on the amount of material that has to be moved in a set period of time.



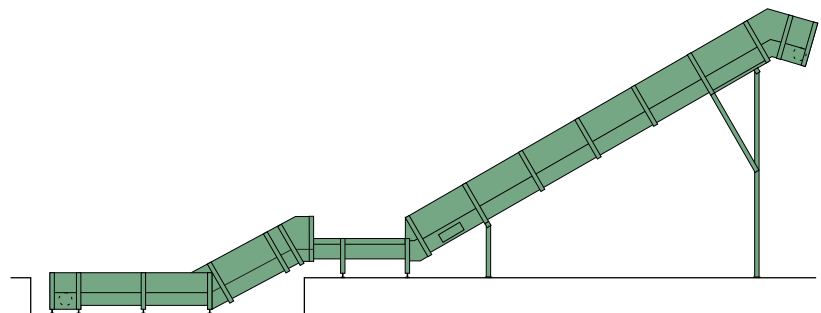
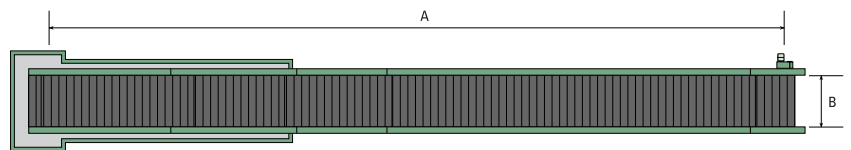
▲ The patented labyrinth sealing system prevents the chain from getting dirty.



▲ Motor is equipped with gearbox, which is mounted directly on the axle, hung in 'silent blocks' to be shock-proof.



▲ Bend of the belt with wear strips that can be changed (replaced) easily.



* This brochure is offered to you by:

Technical specifications

	HBST 1200	HBST 1800
Pulling power chain	24000 Pound	36000 Pound
Pitch chain	152,4 mm (6")	203,2 (8")
Roller diameter chain	66,7 mm (2 5/8")	88,9 mm (3 1/2")
Roller width chain	24,0 mm (1")	36,8 mm (1 1/2")
Number of teeth chain wheels	8	12
Number of teeth chain wheels	90 mm (3 1/2")	120 mm (4 3/4")
Diameter reverse axle	60 mm (2 3/8")	80 mm (3 1/8")



Bollegraaf Recycling Machinery
Tweede Industrieweg 1, 9902 AM Appingedam
Postbus 321, 9900 AH Appingedam, the Netherlands
Tel. +31 (0)596 65 43 33, Fax +31 (0)596 62 53 90
E-mail info@bollegraaf.com, Internet www.bollegraaf.com